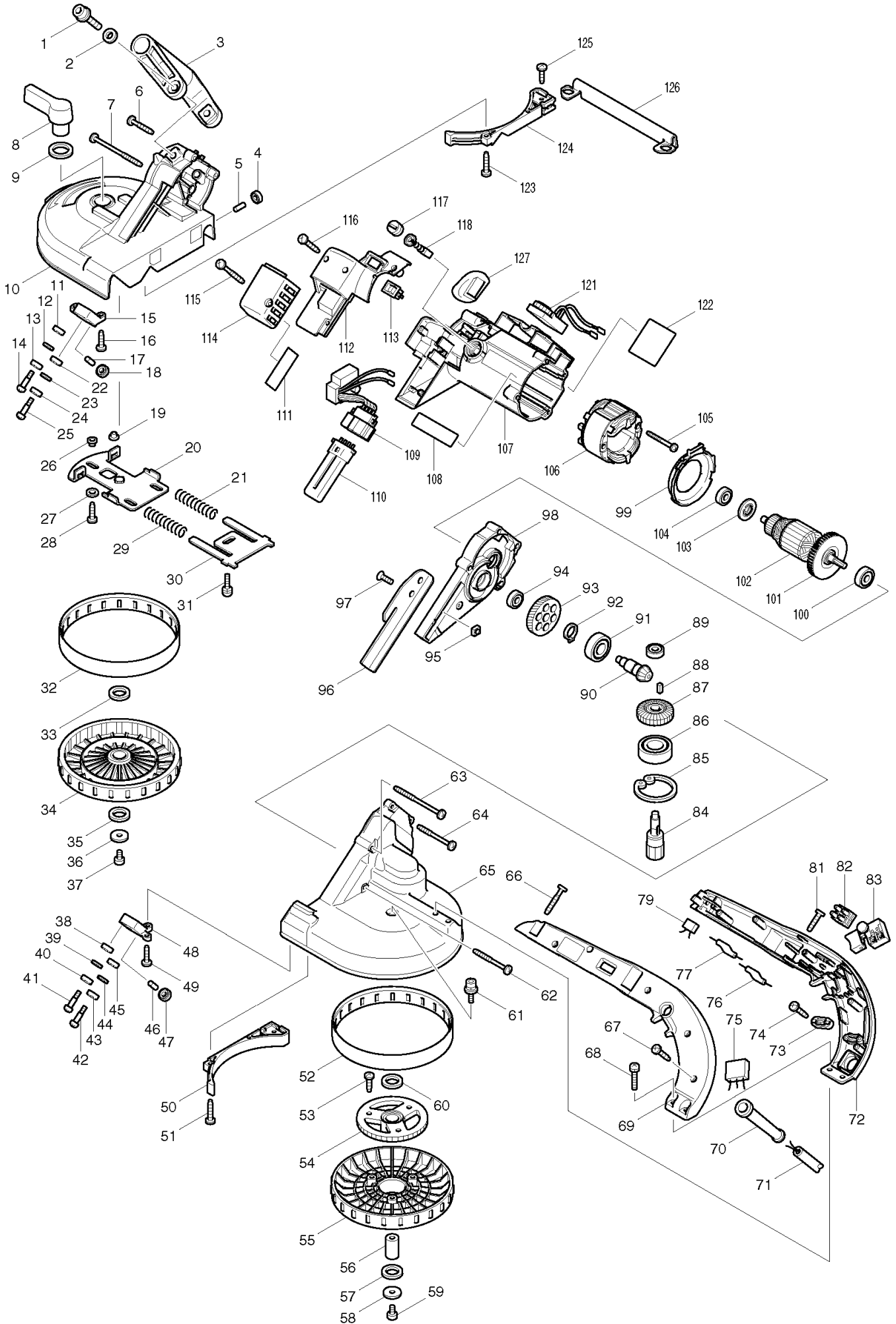


Skissritning för 2107FK - Metallbandsåg



Nr.	Art nr.	Namn
1	922456-6	HEX. SOCKET HEAD BOLT M8X35
2	941202-8	FLAT WASHER 8
3	273614-0	GRIP
4	210033-9	BALL BEARING 696ZZ
5	256033-5	PIN 6
6	265999-8	TAPPING SCREW 4X25
7	266147-2	TAPPING SCREW 4X55
8	272223-2	LEVER 60
9	267041-1	FLAT WASHER 20
10	158702-3	FRONT WHEEL COVER COMPLETE
11	210033-9	BALL BEARING 696ZZ
12	941152-7	FLAT WASHER 6
13	210033-9	BALL BEARING 696ZZ
14	251337-0	+ PAN HEAD SCREW M5
15	317824-0	UPPER HOLDER
16	266034-5	TAPPING SCREW CT 4X16
17	256033-5	PIN 6
18	210033-9	BALL BEARING 696ZZ
19	343494-9	SLEEVE 5
20	163276-1	SLIDE PLATE
21	231449-5	COMPRESSION SPRING 11
22	210033-9	BALL BEARING 696ZZ
23	941152-7	FLAT WASHER 6
24	210033-9	BALL BEARING 696ZZ
25	251337-0	+ PAN HEAD SCREW M5
26	343494-9	SLEEVE 5
27	941051-3	FLAT WASHER 4
28	266034-5	TAPPING SCREW CT 4X16
29	231449-5	COMPRESSION SPRING 11
30	343489-2	TENSION PLATE
31	911221-8	PAN HEAD SCREW M5X16
32	421333-4	RUBBER TIRE
33	253749-3	FLAT WASHER 16
34	152325-9	WHEEL COMPLETE
35	253749-3	FLAT WASHER 16
36	253010-8	FLAT WASHER 6
37	922312-0	HEX. SOCKET HEAD BOLT M6X12
38	210033-9	BALL BEARING 696ZZ
39	941152-7	FLAT WASHER 6
40	210033-9	BALL BEARING 696ZZ
41	251337-0	+ PAN HEAD SCREW M5
42	251337-0	+ PAN HEAD SCREW M5
43	210033-9	BALL BEARING 696ZZ
44	941152-7	FLAT WASHER 6
45	210033-9	BALL BEARING 696ZZ
46	256033-5	PIN 6
47	210033-9	BALL BEARING 696ZZ
48	317823-2	LOWER HOLDER

49	266034-5	TAPPING SCREW CT 4X16
50	418784-0	SAW GUARD HOLDER
51	266042-6	TAPPING SCREW BIND CT 4X20
52	421333-4	RUBBER TIRE
53	266021-4	TAPPING SCREW 5X20
54	140140-3	GEAR COMPLETE
55	419506-1	WHEEL
56	324513-0	LOWER SHAFT
57	253749-3	FLAT WASHER 16
58	253010-8	FLAT WASHER 6
59	922312-0	HEX. SOCKET HEAD BOLT M6X12
60	253749-3	FLAT WASHER 16
61	922323-5	HEX.SOCKET HEAD BOLT M6X16
62	266203-8	TAPPING SCREW BIND CT 4X40
63	266147-2	TAPPING SCREW 4X55
64	266048-4	TAPPING SCREW 4X40
65	317847-8	REAR WHEEL COVER
66	265995-6	TAPPING SCREW 4X18
67	265995-6	TAPPING SCREW 4X18
68	911243-8	PAN HEAD SCREW M5X25
69	183869-8	HANDLE SET
70	682573-1	CORD GUARD 10
71	665865-3	POWER SUPPLY CORD 1.0-2-2.5
72	183869-8	HANDLE SET
73	687052-4	STRAIN RELIEF
74	265995-6	TAPPING SCREW 4X18
75	645253-0	NOISE SUPPRESSOR
76	646078-5	CHOKE COIL
77	646137-5	CHOKE COIL
79	645006-7	NOISE SUPPRESSOR
81	266042-6	TAPPING SCREW BIND CT 4X20
82	654531-7	TERMINAL BLOCK 2P
83	651284-9	SWITCH SGEL115CDY-6
84	227139-6	SPUR GEAR 8
85	962203-3	RETAINING RING R-47
86	211306-3	BALL BEARING 6204LLB
87	227470-0	SPIRAL BEVEL GEAR 29
88	254202-2	KEY 4
89	210029-0	BALL BEARING 608ZZ
90	227481-5	SPIRAL BEVEL GEAR 11
91	211241-5	BALL BEARING 6202DDW
92	961055-9	RETAINING RING S-15
93	226593-1	HELICAL GEAR 64
94	210029-0	BALL BEARING 608ZZ
95	252157-5	SQUARE NUT M6
96	345467-8	STOPPER PLATE
97	251981-3	HEX. SOCKET HEAD BOLT M6X16
98	154475-6	GEAR HOUSING COMPLETE
99	418785-8	BAFFLE PLATE

100	211092-6	BALL BEARING 629DDW
102	513583-6	ARMATURE ASS'Y 220-240V
103	681644-1	INSULATION WASHER
104	210029-0	BALL BEARING 608ZZ
105	266056-5	TAPPING SCREW 5X45
106	634518-5	FIELD 220-240V
107	154472-2	MOTOR HOUSING COMPLETE
108	819064-1	MAKITA MARK
109	631641-7	LIGHT CIRCUIT
110	193730-1	Polttimo
111	418850-3	LENZ
112	418782-4	LAMP COVER
113	651514-8	SWITCH SLE6A
114	418783-2	LAMP BOX
115	266048-4	TAPPING SCREW 4X40
116	265935-4	TAPPING SCREW 3X20
117	643750-0	BRUSH HOLDER CAP
118	191963-2	Hiilet CB-303
121	631639-4	CONTROLLER
122	860922-4	NAME PLATE 2107F
123	266042-6	TAPPING SCREW BIND CT 4X20
124	418784-0	SAW GUARD HOLDER
125	266034-5	TAPPING SCREW CT 4X16
126	345468-6	SAW GUARD
127	421885-5	CAP